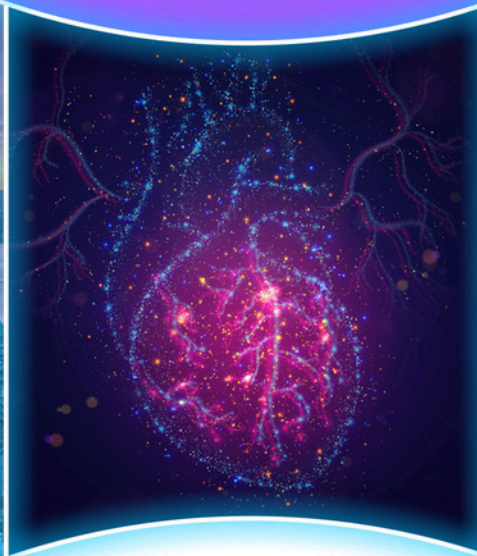


# ISTANBUL COMPLETE CT EXPERIENCE TRAINING



05-06 MARCH 2025

ADN CoE Training & Research Center



**ADN CoE<sup>®</sup>**

# INFORMATION BOOKLET

The publishing rights of this book belong to ADN CoE Education Consultancy and Organization Limited Company. Partially or fully copying by any means, photocopying, transcription, printing, or any other reproduction without written permission and proper citation is strictly prohibited.

Copyright © 2023

1. Edition, December, 2023

Publisher and Chief Editor  
Printing House

Nazire ÇAVUŞ  
SEDA OZALIT

Altunizade, Kisikli Cd. No:49, 34662 Üsküdar/İstanbul



## ADN CoE®

Please note that this training is specialized procedural trainings provided by ADN CoE. This training is accredited by Ethical Medtech and EACCME and it is independent of any other training offered by relevant device company.

### WARNING

Medical information is constantly evolving and being updated. Standard safety practices should be observed, and it should be acknowledged that changes in treatments and drug applications may be necessary in light of new research and clinical experiences.

Readers are advised to verify the latest product information, dosage, administration methods, and contraindications provided by the drug's manufacturer regarding medications. Determining the best treatment and the correct drugs and dosages for each patient is the responsibility of the attending physician. The publisher and editors are not responsible for any harm or damage to patients or equipment that may arise from the use of this publication.

---

Company Name	ADN CoE EĞİTİM DANIŞMANLIK VE ORGANİZASYON LIMITED ŞİRKETİ
Address	İnkılap Mahallesi Dr. Adnan Büyükdeniz Caddesi No:13, A Blok, K:3 34768 Ümraniye, İstanbul / Türkiye
Telephone	+90 539 821 47 47
E-mail	info@adncoe.com
Website	www.adncoe.com
VAT Number	0081750793 Sultanbeyli Tax Office



# ISTANBUL COMPLETE CT EXPERIENCE TRAINING

Cardiac Computed Tomography (CT) is a sophisticated medical imaging procedure designed to provide detailed insights into the structure and function of the heart. The process involves several crucial steps to capture high-resolution images for diagnostic purposes.

Patients undergoing cardiac CT typically begin with preparation, which may include changing into a hospital gown and removing metallic objects that could interfere with the imaging. Depending on the specific procedure, patients might also need to fast for a designated period.

The synchronization of the CT scan with the patient's heartbeat is achieved through an electro-cardiogram (ECG). This ensures that images are acquired at precise points in the cardiac cycle, minimizing motion artifacts and optimizing the clarity of the results.

Contrast material, often iodine-based, is commonly administered intravenously to enhance the visibility of blood vessels and cardiac structures. This contrast material absorbs X-rays, appearing bright on the images and aiding in the evaluation of blood flow and cardiac function.

As the patient lies on the CT scanner table, it moves through the gantry a rotating structure housing the X-ray source and detectors. The X-ray beams pass through the body, and detectors measure the transmitted radiation. The data obtained from multiple angles are then processed by a computer to create detailed cross-sectional images of the heart.

The reconstruction of data involves advanced algorithms, resulting in both 2D and 3D images of the cardiac structures. The radiologist or cardiologist interprets these images, looking for signs of coronary artery disease, structural abnormalities, or other cardiac conditions.

Cardiac CT is particularly valuable for assessing coronary arteries, revealing information about plaque, stenosis, and other abnormalities that impact cardiac health. In addition to anatomical imaging, functional information about blood flow and myocardium perfusion can be obtained, contributing to a comprehensive cardiac evaluation.

Patient safety is a priority during the cardiac CT process, with considerations given to factors such as radiation dose and contrast material usage. This is especially important for individuals with allergies or impaired kidney function.

In conclusion, cardiac computed tomography has emerged as an integral tool in cardiovascular diagnostics, offering non-invasive and detailed insights into the complexities of the heart. The process, encompassing preparation, synchronization, contrast administration, imaging, and interpretation, plays a pivotal role in diagnosing and managing various cardiac conditions.

# 05 MARCH 2025

<b>09:00-09:15</b>	Registration & Welcome
<b>09:15-10:00</b>	CT Angiography, Where we are in 2024
<b>10:00-10:30</b>	Patient Preparation and acquisition protocols
<b>10:30-11:00</b>	Calcium Scoring, Methods, Diagnostic and Prognostic Values
<b>11:00-11:15</b>	Break & Visiting Exhibition
<b>11:15-12:00</b>	CT Angio for Coronary Stenosis Assessment
<b>12:00-13:00</b>	Hands on Training on Workstations Siemens Syngovia
<b>13:00-14:00</b>	Lunch Break
<b>14:00-14:30</b>	CT for Plaque Assessment
<b>14:30-15:00</b>	Hands on Training on Workstations Siemens Syngovia
<b>15:00-15:30</b>	Non-Coronary Cardiac Findings
<b>15:30-16:00</b>	Break & Visiting Exhibition
<b>16:00-16:30</b>	Incidental and Extra Cardiac Findings
<b>16:30-17:00</b>	Q&A Session (Open forum for questions, clarifications, and discussion)

# 06 MARCH 2025

<b>09:00-09:15</b>	Introduction and Objectives of 2nd Day
<b>09:15-10:00</b>	TAVI Protocol Acquisition
<b>10:00-10:45</b>	Pre-TAVI Assessment (The Role of CT Pre-TAVI Assessment)
<b>10:45-11:00</b>	Coffee Break
<b>11:00-12:00</b>	Case Review-Hands on Pre- TAVI Assesment(3mensio Stations)
<b>12:00-12:30</b>	Vascular Evaluation
<b>12:30-13:30</b>	Lunch Break
<b>13:30-14:00</b>	Case Review- Hands on Vascular Assesment (3mensio Stations)
<b>14:00-14:30</b>	Post TAVI Assessment
<b>14:30-15:00</b>	Case Review Post TAVI Assessment and Complications
<b>15:00-15:30</b>	Aortic Aneurysm
<b>15:30-16:00</b>	Q&A Session (Open forum for questions, clarifications, and discussion)
<b>16:00</b>	Closing Remarks and Certificates



# VENUE

## ADN CoE Training, Research Center & Core Lab





# ACCOMMODATION

## CROWNE PLAZA ISTANBUL ORYAPARK

The Intercontinental Hotels Group is one of the most important establishment that set out to become the first choice of hotel guests and investors and to guide the hospitality industry with over 300 years of experience.

Intercontinental Hotels Group, that is with its prestigious reputation in the international arena, offers unique accommodation experiences with its 767 thousand rooms in more than 5 thousand hotels.

IHG aims to achieve sustainable growth by investing in the future growth of its brands by following a disciplined approach to capital allocation. IHG, which has adopted a guest-oriented service approach as a corporate culture, is active in nearly 100 countries.

### HOTEL CANCELLATION POLICY

If you wish to cancel or modify your hotel booking, please do not contact the hotel directly, send us a notification by email at: [info@adncenterofexcellence.com](mailto:info@adncenterofexcellence.com) Cancellations received earlier than 10 days before the beginning of the course are eligible for a full hotel refund. After that deadline, a one-night deposit will be deducted from your refund.

### BOOKING POLICY

The deadline for hotel booking is 10 days before the course. Unfortunately, ADN CoE cannot guarantee room availability past that deadline. Bookings are made on a first-come, first-served basis. In case of non-availability, we shall do our best to re-accommodate you in a nearby hotel of equal standard.





## TRANSFER DETAILS

From	To
Airport	Hotel
Hotel	Restaurant
Restaurant	Hotel
Hotel	Hospital
Hospital	Airport

Transfer fees do not include VAT. The VAT rate is 20%.

You can contact us for your private transfer requests.

ADN CoE reserves the right to reflect the possible changes in the amounts of taxes, duties and taxes to the prices.



# Useful Information



## Transfer

The transfer vehicle will accompany you during the training.



## Training Location

**ADN CoE Training, Research Center & Core Lab**

İnkılap Mahallesi Dr. Adnan Büyükdeniz Caddesi No:13, A Blok,  
K:3 34768 Ümraniye, İstanbul / Türkiye



## Contact Information

**Turkey:**

+90 530 173 62 12

**Americas, Far East & West Asia:**

+90 533 031 96 91

**European & African Countries:**

+90 530 339 22 12

**Middle East & Gulf area:**

+90 530 814 76 17

**Dress Code**

**Business Casual - Smart Casual**

**ADN CoE®**

## ADN CoE's Bank Details

### Garanti Bank-ADN COE EĞİTİM DANIŞMANLIK VE ORGANİZASYON LIMITED SİRKETİ

<b>TL Account</b> IBAN Bank Account Number	TR89 0006 2000 4430 0006 2943 38 708-6297110
<b>Dolar Account</b> IBAN Bank Account Number	TR66 0006 2000 4430 0009 0646 84 708-9074907
<b>Euro Account</b> IBAN Bank Account Number	TR93 0006 2000 4430 0009 0646 83 708-9074908
Swift Code:	TGBATRISXXX

## ADN CoE Vendor Details

<b>Company Name</b>	ADN CoE EĞİTİM DANIŞMANLIK VE ORGANİZASYON LIMITED SİRKETİ
<b>Adress</b>	İnkılap Mahallesi Dr. Adnan Büyükdeniz Caddesi No:13, A Blok, K:3 34768 Ümraniye, İstanbul / Türkiye
<b>Telephone</b>	+90 539 821 47 47
<b>E-mail</b>	info@adncoe.com
<b>Website</b>	www.adncoe.com
<b>VAT Number</b>	0081750793 Sultanbeyli Tax Office

Get to know more about us:

[www.adncoe.com](http://www.adncoe.com)[info@adncoe.com](mailto:info@adncoe.com)[@adn\\_coe](https://www.linkedin.com/company/adncoe)[@adn\\_coe](https://www.facebook.com/adncoe)[@adn\\_coe](https://www.instagram.com/adncoe)[@adn\\_coe](https://twitter.com/adncoe)





**ADN CoE<sup>®</sup>**