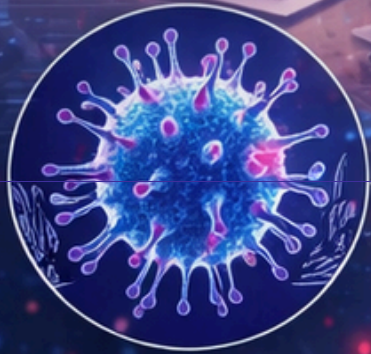
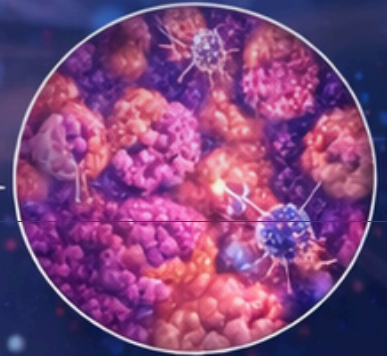


# NEUROPATHOLOGY & IMAGING CORRELATION WORKSHOP



VIRUS

BACTERIA



CANCEROUS TISSUE



PARASITES



**ADN CoE**<sup>®</sup>

Training, Research Center & Core Lab

# INFORMATION BOOKLET

The publishing rights of this book belong to ADN CoE Education Consultancy and Organization Limited Company. Partially or fully copying by any means, photocopying, transcription, printing, or any other reproduction without written permission and proper citation is strictly prohibited.

Copyright © 2023

1. Edition, December, 2023

Publisher and Chief Editor

Nazire ÇAVUŞ

Printing House

SEDA OZALIT

Altunizade, Kisikli Cd. No:49, 34662 Üsküdar/istanbul



## ADN CoE®

Please note that this training is specialized procedural trainings provided by ADN CoE. This training is accredited by Ethical Medtech and EACCME and it is independent of any other training offered by relevant device company.

### WARNING

Medical information is constantly evolving and being updated. Standard safety practices should be observed, and it should be acknowledged that changes in treatments and drug applications may be necessary in light of new research and clinical experiences.

Readers are advised to verify the latest product information, dosage, administration methods, and contraindications provided by the drug's manufacturer regarding medications. Determining the best treatment and the correct drugs and dosages for each patient is the responsibility of the attending physician. The publisher and editors are not responsible for any harm or damage to patients or equipment that may arise from the use of this publication.

---

Company Name	ADN CoE EGITIM DANISMANLIK VE ORGANIZASON LIMITED Sirketi
Adress	İnkılap Mahallesi Dr. Adnan Büyükdeniz Caddesi No:13, A Blok, K:3/7 34768 Ümraniye, İstanbul / Türkiye
Telephone	+90 530 035 96 39
E-mail	trainings@adncoe.com
Website	www.adncoe.com
VAT Number	0081750793 Alemdağ Tax Office



## ADN CoE®

# DAY 1

## Foundations of Neuropathology & Neuroimaging

Time	Session	Format
09:00 – 09:30	Registration & Welcome Coffee	Opening Remarks
09:30 – 10:00	Principles of Neuropathology in Clinical Practice	Lecture
10:00 – 11:00	Histopathology of Major Neurological Disorders	Lecture
11:00 – 11:15	Coffee Break	Networking
11:15 – 12:30	Correlation Between Neuropathology & Neuroimaging Findings	Case-Based Discussion
13:00 – 14:00	Lunch Break	Networking
13:30 – 14:45	Interpretation of CT & MRI in Neurological Diseases	Clinical Strategy Session
14:45 – 15:00	Coffee Break	Networking
15:00 – 16:00	Step-by-Step Histopathologic Evaluation of Neurological Specimens	Practical Workshop
16:00 – 16:30	Integration of Imaging Findings with Pathologic Diagnosis	Technical Session
16:30 – 17:00	Day 1 Wrap-Up & Open Q&A	Wrap-Up

# DAY 2

## Advanced Neuropathology, Simulation & Multidisciplinary Integration

Time	Session	Format
09:00 – 09:30	Morning Coffee & Day 1 Recap	Lecture
09:30 – 10:45	Neuropathology of Brain Tumors & Neurodegenerative Disorders	Case-Based Lecture
10:45 – 11:00	Coffee Break	Networking
11:00 – 12:15	High-Fidelity Simulation of Imaging–Pathology Correlation	High-Fidelity Simulation
12:15 – 13:15	Lunch Break	Networking
13:15 – 14:15	Multidisciplinary Case Discussions: Neurology, Neurosurgery & Radiology	Multidisciplinary Simulation
14:00 – 14:15	Coffee Break	Networking
14:15 – 15:30	Recognition of Diagnostic Pitfalls & Differential Diagnosis	Advanced Simulation
15:30 – 16:15	Neuropathology Reporting Standards & Clinical Communication	Integrated Workflow Session
16:15 – 16:45	Outcome Optimization & Quality Metrics in Neuropathology	Systems-Based Review
16:45 – 17:00	Closing Remarks & Certificate Distribution	Wrap up

# VENUE

**ADN CoE®**

Training, Research Center & Core Lab

SCAN



İnkılap Mahallesi Dr. Adnan Büyükdeniz  
Caddesi No:13, A Blok, K:3 D:7, 34768  
Ümraniye, İstanbul / Türkiye

Contact Information: +90 530 035 96 39



**ADN CoE®**



# ACCOMMODATION

## CROWNE PLAZA ISTANBUL ORYAPARK

The Intercontinental Hotels Group is one of the most important establishment that set out to become the first choice of hotel guests and investors and to guide the hospitality industry with over 300 years of experience.

Intercontinental Hotels Group, that is with its prestigious reputation in the international arena, offers unique accommodation experiences with its 767 thousand rooms in more than 5 thousand hotels.

IHG aims to achieve sustainable growth by investing in the future growth of its brands by following a disciplined approach to capital allocation. IHG, which has adopted a guest-oriented service approach as a corporate culture, is active in nearly 100 countries.

### HOTEL CANCELLATION POLICY

If you wish to cancel or modify your hotel booking, please do not contact the hotel directly, send us a notification by email at: [info@adncenterofexcellence.com](mailto:info@adncenterofexcellence.com) Cancellations received earlier than 10 days before the beginning of the course are eligible for a full hotel refund. After that deadline, a one-night deposit will be deducted from your refund.

### BOOKING POLICY

The deadline for hotel booking is 10 days before the course. Unfortunately, ADN CoE cannot guarantee room availability past that deadline. Bookings are made on a first-come, first-served basis. In case of non-availability, we shall do our best to re-accommodate you in a nearby hotel of equal standard.

# Useful Information



## Transfer

The transfer vehicle will accompany you during the training.



## Training Location

**ADN CoE Training, Research Center & Core Lab**

İnkılap Mahallesi Dr. Adnan Büyükdeniz Caddesi No:13, A Blok,  
K:3 D:7, 34768 Ümraniye, İstanbul / Türkiye



## Contact Information

+90 530 035 96 39



## Dress Code

Business Casual - Smart Casual



